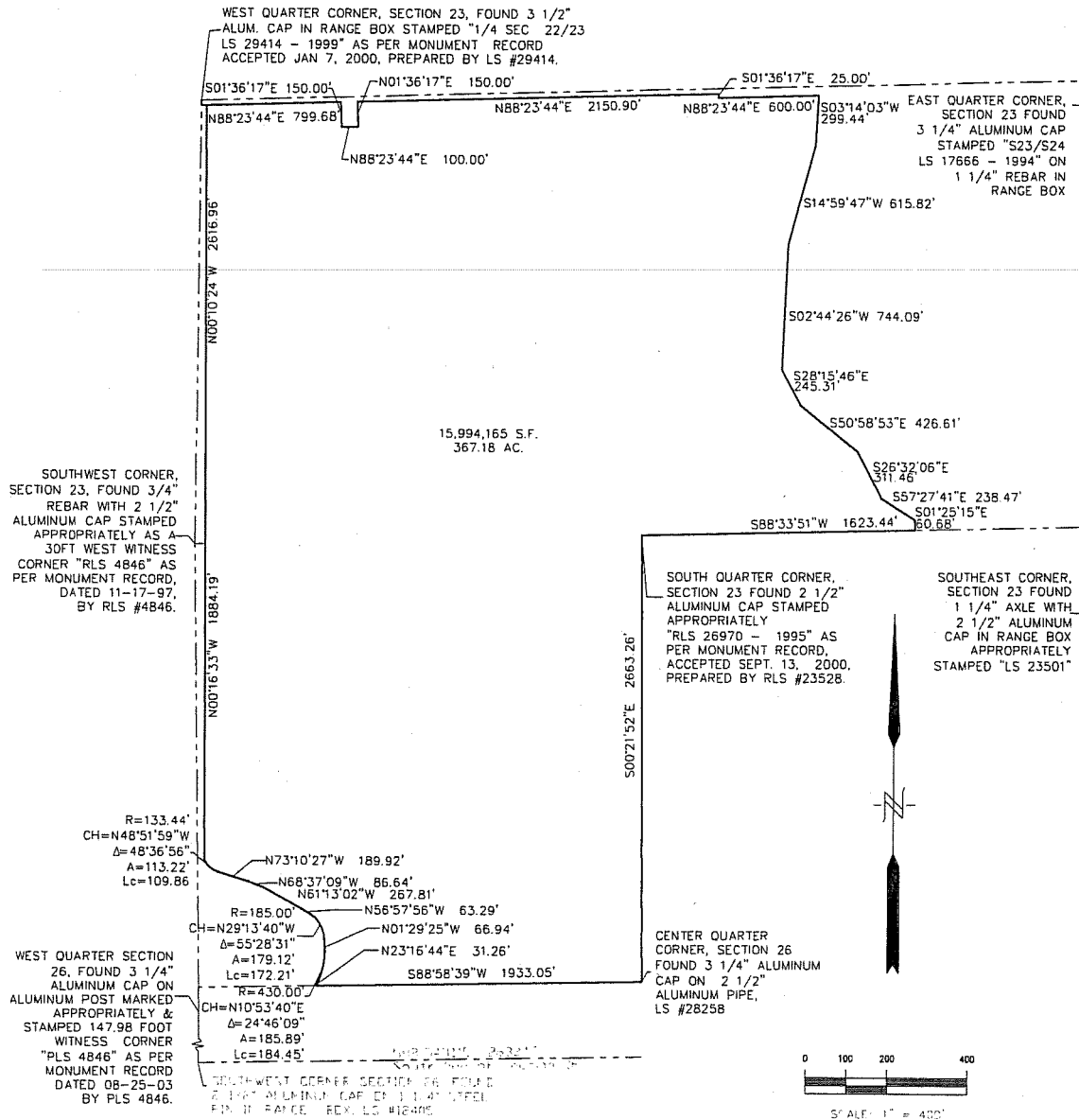


EXHIBIT 1

A PARCEL OF LAND LOCATED IN THE SOUTH HALF OF SECTION 23 AND THE NORTHWEST QUARTER OF SECTION 26, T1N, R69W OF THE 6TH P.M., COUNTY OF BOULDER, STATE OF COLORADO.



Wednesday, June 14, 2006 10:20:35 AM DRAWING: H:\3543_004\Legal Description\LEGAL EXHIBIT.DWG LAYOUT: MEADOW SWEET

THIS EXHIBIT DOES NOT REPRESENT A MONUMENTED SURVEY. IT IS ONLY INTENDED TO DEPICT THE ATTACHED DESCRIPTION



TETRA TECH RMC

1900 S. SUNSET ST., SUITE 1-F, LONGMONT, CO 80501
TEL 303.772.5282 METRO 303.665.6283 FAX 303.665.6959

DATE 06/13/06 INITIALS CMD
JOB# 80-3543.004.00

4 OF 4